

# SPRAY NOZZLES & SHOWERS

## FOR THE PULP & PAPER INDUSTRY

### SPRAY CHARACTERISTICS

- > Flat Jet spray
- > Optimum cleaning
- > Spray angles 0, 30 and 60 degrees
- > Raised profile gives cleaning potential in shower manifolds

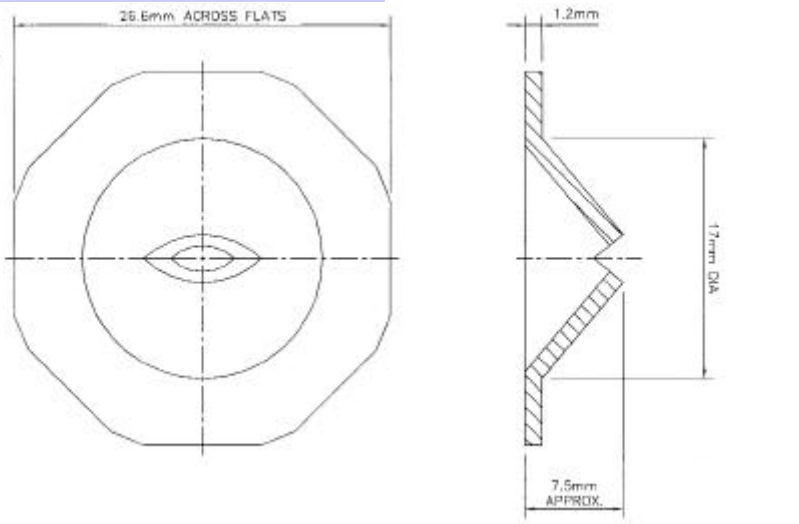
### CONSTRUCTION & MATERIALS

- > Stainless Steel
- > One-piece profile
- > Option of different profiles (depending on quantity)

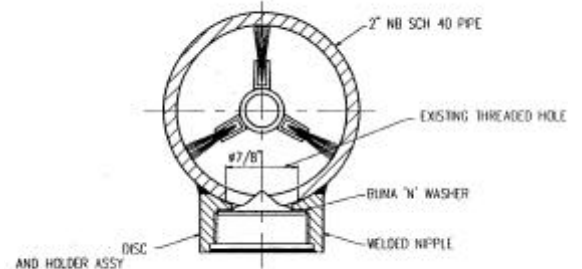
### DISC NOZZLE



### TYPICAL DIMENSIONS



### TYPICAL INSTALLATION



### PERFORMANCE DATA

Nozzle Number	Equivalent Orifice Diam (mm)	Spray Angle			Flow L/min @ Bar G					
		0	30	60	1.5	3	4	7	10	20
PN08-XX	0.8	X			0.36	0.51	0.6	0.78	0.9	1.3
PN10-XX	1	X	X		0.64	0.91	1	1.4	1.6	2.3
PN12-XX	1.2	X	X		0.92	1.3	1.5	2	2.3	3.4
PN15-XX	1.5	X	X	X	1.2	1.7	2	2.6	3	4.4
PN20-XX	2	X	X	X	2.2	3.1	3.6	4.8	5.6	8.1
PN25-XX	2.5			X	3.5	4.9	5.6	7.5	8.9	12.6
PN30-XX	3			X	5.5	7.8	9	11.9	14.1	20
PN40-XX	4			X	8.8	12.4	14.3	18.9	22.7	32
PN50-XX	5			X	13.7	19.4	22.4	30	35.4	50