

## SPRAY CHARACTERISTICS

- Produces a hollow cone spray pattern with uniform distribution and excellent atomisation.
- Will operate at very low differential pressures.
- Spray angles widen as the spray pressure increases.
- Has a narrower droplet spectrum than full cone nozzles of the same capacity.

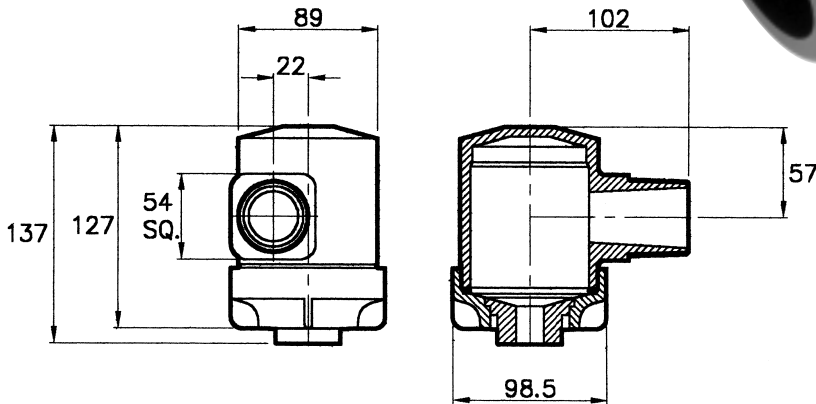
## CONSTRUCTION AND MATERIALS

- Moulded in Glass filled Polypropylene.
- Clog resistant design with no internal vanes or cores.
- Incorporates a removable screwed cap, with 'O' ring seal for ease of cleaning of the swirl chamber and orifice assembly.
- 1½" WRA has an adaptor inlet to suit quick couplers.
- 1½" WRS has a 1½" Male BSPT thread inlet.
- Pressed in orifice can be changed to alter the flow capacity.

## ORDER EXAMPLE

1½" WRA 49 (Adaptor Inlet).

1½" WRS 88 (Threaded Inlet).



Maximum Recommended  
Pressure: 7 Bar.G.

## CAPACITY CHART

NOZZLE NUMBERS		APPROX OUTLET ORIFICE SIZE (mm)	FLOW RATE IN LITRES/MIN AT Bar.G.							NOMINAL SPRAY ANGLE (°) AT 0,7 Bar.G.
ADAPTOR	THREADED		0,2	0,3	0,5	0,7	1,0	1,5	2,0	
WRA 14	WRS 14	10,0	20	25	32	38	45	55	62	50
WRA 18	WRS 18	11,9	26	32	41	48	57	69	80	50
WRA 21	WRS 21	13,1	30	37	47	56	66	80	92	60
WRA 23	WRS 23	14,3	34	41	53	62	74	90	103	60
WRA 28	WRS 28	15,9	40	49	63	74	88	107	122	65
WRA 36	WRS 36	19,0	51	63	81	96	114	139	160	70
WRA 43	WRS 43	22,2	61	75	96	114	136	166	190	80
WRA 49	WRS 49	25,4	70	86	111	131	156	191	219	80
WRA 54	WRS 54	27,0	78	95	122	144	172	210	241	85
WRA 63	WRS 63	30,2	90	110	142	168	200	244	281	85
WRA 75	WRS 75	35,0	108	132	170	201	240	293	338	90
WRA 88	WRS 88	41,3	126	154	198	234	279	340	392	95
WRA 100	WRS 100	46,0	142	174	225	266	317	388	447	95
WRA 112	WRS 112	50,8	161	197	253	299	357	437	501	100

HOLLOW CONE SPRAY

TYPE WRA-WRS  
WHIRLRAIN

Contact our Helpline for  
any special requirements:  
Tel: +44 (0) 151 424 6821  
Fax: +44 (0) 151 495 1043  
e-mail: sales@delavan.co.uk  
Web: www.delavan.co.uk

