

## SPRAY CHARACTERISTICS

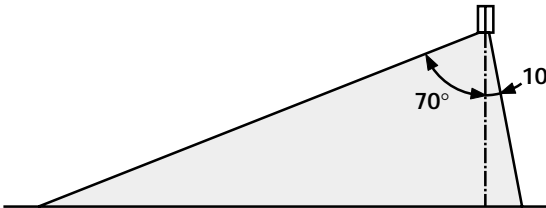
- Asymmetric flat spray pattern with spray projected to the side.
- Spray density decreasing from heavy upper edge to give uniform ground contact.

## CONSTRUCTION AND MATERIALS

- One piece construction with Male BSPT thread only.
- Straight through elliptical orifice with no internal vanes or cores.
- Brass and Stainless Steel standard.
- Other materials available to special order.

## ORDER EXAMPLE

1/4" WJ 20 Brass.

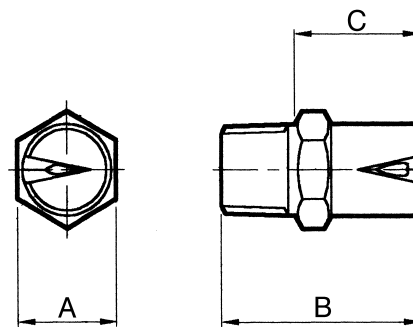


TYPICAL SPRAY PATTERN @ 2.8 Bar.G.



## DIMENSIONS AND WEIGHTS

Thread Size	Nozzle Type	Dimensions (mm)			Weight (g)
		A Hex	B	C	
1/4	WJ	15,3	30,2	19,0	43
3/8	WJ	18,0	40,0	25,4	85
1/2	WJ	25,7	46,0	31,8	114
3/4	WJ	28,0	50,0	29,3	170
1	WJ	38,0	62,7	39,7	380



Maximum Recommended Pressure: 100 Bar.G.

## CAPACITY CHART

NOZZLE NUMBER	BSPT THREAD SIZE					Equiv. Orifice Dia. (mm)	FLOW CAPACITY IN LITRES/MIN AT Bar.G.						
	1/4	3/8	1/2	3/4	1		0,7	1,5	2	3	4	5	7
WJ 20						2,8	3,80	5,41	6,25	8,05	9,37	9,94	12,4
WJ 30						3,6	5,95	8,50	9,82	11,8	13,8	15,1	17,8
WJ 40						4,0	7,78	10,5	12,1	15,6	18,3	20,6	24,3
WJ 50						4,4	9,61	13,9	16,1	19,9	22,8	25,5	30,2
WJ 60						4,8	11,4	16,6	19,2	23,7	27,2	30,7	36,1
WJ 70						5,2	13,3	19,7	22,8	27,5	32,1	35,9	42,5
WJ 80						5,6	15,1	22,1	25,5	31,7	36,6	41,1	48,0
WJ 100						6,4	19,2	27,5	31,7	39,3	45,5	51,0	60,4
WJ 125						7,0	22,9	33,5	38,7	47,4	54,7	61,2	72,4
WJ 150						7,5	28,8	41,7	48,2	59,2	68,3	76,5	90,1
WJ 200						8,8	38,0	55,7	64,3	79,1	91,1	102	120
WJ 250						9,8	47,6	69,6	80,4	98,5	113	128	150
WJ 300						10,8	57,2	83,9	96,9	118	137	153	181

FLAT SPRAY

TYPE WJ

Contact our Helpline for any special requirements:  
Tel: +44 (0) 151 424 6821  
Fax: +44 (0) 151 495 1043  
e-mail: sales@delavan.co.uk  
Web: www.delavan.co.uk

