



### SPRAY CHARACTERISTICS

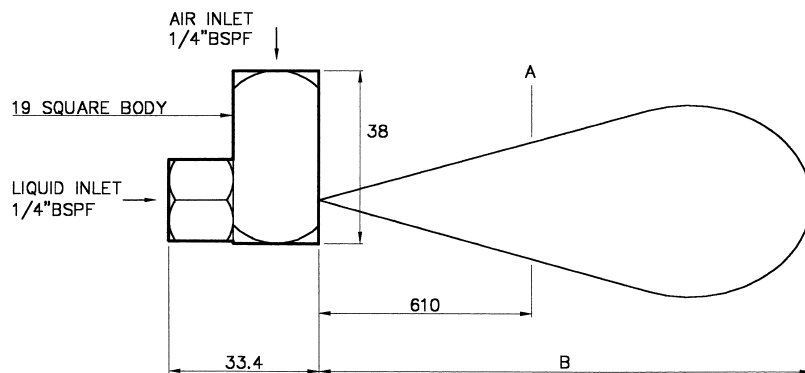
- Generally a long narrow cloud of finely atomised mist or fog. Will atomise most liquids which can be made to flow under gravity head.
- External mixing of air and liquid.
- Full cone spray pattern.

### CONSTRUCTION AND MATERIALS

- This nozzle is precision made to ensure best possible atomisation using compressed air or other gas or steam as the atomising medium.
- The GC nozzle is designed for atomising larger volumes of liquid.
- Larger flowrates available to special order.
- Brass and Stainless Steel are standard.
- Other materials available to special order.

### ORDER EXAMPLE

GC 3 - Stainless Steel.



### CAPACITY CHART

NOZZLE NUMBER		WATER FLOW RATE IN LITRES/HOUR AT Bar.G. AIR FLOW RATE IN M <sup>3</sup> /MIN (Free air)					
		0,7	1,0	1,4	2,1	2,8	4,1
GC 1	L/Hr	26	39	46	56	63	79
	m <sup>3</sup> Air	0,09	0,12	0,13	0,15	0,17	0,20
	A (mm)	280	280	250	250	250	250
	B (Mtr)	2,4	2,4	2,7	3,1	3,7	4,3
GC 2	L/Hr	39	48	55	63	74	89
	m <sup>3</sup> Air	0,10	0,12	0,14	0,16	0,18	0,20
	A (mm)	200	200	200	200	230	250
	B (Mtr)	2,7	2,7	3,1	3,1	3,7	4,3
GC 3	L/Hr	48	56	63	77	89	125
	m <sup>3</sup> Air	0,11	0,13	0,15	0,18	0,21	0,24
	A (mm)	200	200	230	230	250	250
	B (Mtr)	3,1	3,4	3,7	4,0	4,3	4,3
GC 4	L/Hr	63	80	86	103	114	148
	m <sup>3</sup> Air	0,13	0,16	0,19	0,23	0,27	0,32
	A (mm)	180	190	200	230	240	250
	B (Mtr)	3,1	3,4	3,7	4,0	4,3	4,3

Contact our Helpline for any special requirements:  
Tel: +44 (0) 151 424 6821  
Fax: +44 (0) 151 495 1043  
e-mail: sales@delavan.co.uk  
Web: www.delavan.co.uk

