



**SPRAY CHARACTERISTICS**

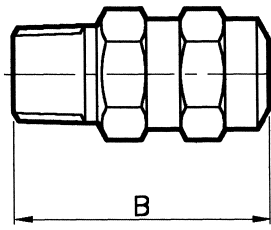
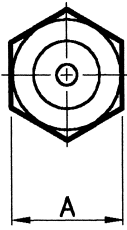
- Uniform distribution of droplets in a solid cone spray pattern.
- Droplet size is larger than in hollow cone nozzles of equal capacity.
- Impact of spray is generally lower than narrower spray angles, assuming the same flow rate. Pressure increases affect spray angle.

**CONSTRUCTION AND MATERIALS**

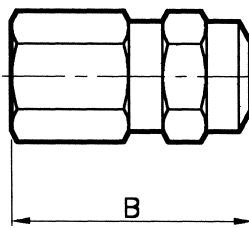
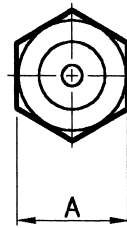
- Manufactured with a two piece body design and removable core.
- Core imparts the necessary swirl to produce a solid cone spray pattern.
- Threads are Male and Female NPT.
- Manufactured with a two piece body design.
- Brass and 303 Stainless Steel are standard.
- Other materials available to special order.

**ORDER EXAMPLE**

1/8" CTM (Male) 4 Brass.  
1/2" CTF (Female) 25 Brass.



CTM (MALE) ASSEMBLY



CTF (FEMALE) ASSEMBLY

**DIMENSIONS AND WEIGHTS**

Type	Thread Size	Dimensions (mm)		Weight (g)
		A Hex	B	
CTF (Female)	1/8	14,3	31,8	28
	1/4	15,9	34,2	43
	3/8	19,0	39,0	65
CTM (Male)	1/2	25,4	46,9	128
	1/8	14,3	28,6	28
	1/4	15,9	36,5	43
	3/8	19,0	38,9	65
	1/2	25,4	48,4	128

**CAPACITY CHART**

Maximum Recommended Pressure: 35 Bar.G.

NOZZLE NUMBER		APPROX. ORIFICE DIA. (mm)	NPT THREAD SIZES				FLOW RATE IN LITRES/MIN AT Bar.G.						SPRAY ANGLES (°) AT 0,7 Bar.G.
FEMALE	MALE		1/8	1/4	3/8	1/2	0,35	0,7	1,5	3	5	7	
CTF 2	CTM 2	1,2					0,53	0,76	1,10	1,58	1,98	2,29	45°
CTF 3	CTM 3	1,5					0,84	1,14	1,70	2,37	2,88	3,43	55°
CTF 3.5	CTM 3.5	1,6					0,95	1,34	1,98	2,69	3,32	3,82	45°
CTF 4	CTM 4	1,7					1,07	1,53	2,21	3,16	3,97	4,77	50°
CTF 5	CTM 5	2,0					1,37	1,91	2,77	3,75	4,69	5,72	55°
CTF 6.5	CTM 6.5	2,25					1,79	2,48	3,56	5,14	6,13	7,25	45° *
CTF 6.5	CTM 6.5	2,4					1,79	2,48	3,56	5,14	6,13	7,25	60° *
CTF 9.5	CTM 9.5	2,7					2,63	3,63	5,14	7,11	9,02	10,69	45°
CTF 10	CTM 10	2,8					2,78	3,82	5,53	7,50	9,74	11,45	60°
CTF 15	CTM 15	3,5					4,20	5,72	8,30	11,45	14,42	16,79	65°
CTF 16	CTM 16	3,6					4,60	6,10	8,69	12,25	15,50	17,94	50°
CTF 22	CTM 22	4,6					6,10	8,40	11,85	16,60	20,92	24,42	80°
CTF 25	CTM 25	4,8					6,87	9,54	13,83	18,96	24,16	28,24	65°
CTF 32	CTM 32	5,2					8,78	12,20	17,38	24,10	30,65	35,87	75°
CTF 40	CTM 40	6,4					11,07	15,26	21,73	30,00	38,22	45,03	90°

\* Specify either 45° or 60° spray angle for CT 6.5 nozzle when ordering.

Contact our Helpline for any special requirements:  
Tel: +44 (0) 151 424 6821  
Fax: +44 (0) 151 495 1043  
e-mail:sales@delavan.co.uk  
Web:www.delavan.co.uk

