

SPRAY CHARACTERISTICS

- Uniform distribution of droplets in a solid cone wide angle spray pattern.
- Droplet size is larger than in hollow cone nozzles of equal capacity.
- Impact of spray is generally greater with narrower spray angles, assuming the same flow rate. Pressure increases affect spray angle.

CONSTRUCTION AND MATERIALS

- One piece body with pressed-in, cross-milled core which is removable.
- Core imparts the necessary swirl to produce a solid cone spray pattern.
- Hexagon body for easy installation eliminates distortion of orifice during installation.
- Supplied with Male BSPB thread only.
- Brass and 316 Stainless Steel are standard.
- Other materials available to special order.

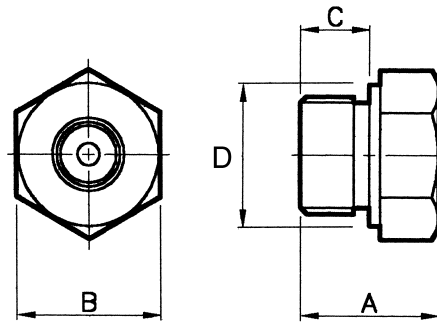


ORDER EXAMPLE

3/8" CBN 22 Stainless Steel.

DIMENSIONS AND WEIGHTS

Thread Size	Dimensions (mm)					Weight (g)
	A	B Hex	C	D		
1/8"	10,7	14,0	6,4	12,7	10	
1/4"	14,0	18,0	7,0	16,5	20	
3/8"	20,0	20,8	10,0	20,0	32	
1/2"	25,4	25,7	12,7	24,9	63	
3/4"	33,3	31,8	15,9	31,0	105	
1"	47,6	38,0	19,1	38,0	210	



Maximum Recommended Pressure:
35 Bar.G. (Metal), 7 Bar.G. (Plastic).

CAPACITY CHART

NOZZLE NUMBER	BSPB THREAD SIZE						FLOW RATE IN LITRES/MIN AT Bar.G.											SPRAY ANGLES (°) AT Bar.G.		
	1/8	1/4	3/8	1/2	3/4	1	0,35	0,7	1	1,5	2	3	4	6	7	8	,7	2	6	
CBN 6							0,88	1,25	1,50	1,88	2,18	2,65	2,87	3,41	3,54	3,76	110	100	90	
CBN 8							1,30	1,86	2,28	2,84	3,23	4,00	4,55	5,38	5,72	5,97	125	120	100	
CBN 11							1,86	2,79	3,23	3,86	4,31	5,15	5,45	6,73	7,43	7,70	115	120	95	
CBN 15							2,60	3,67	4,50	5,26	5,59	6,64	7,24	8,70	9,16	9,70	115	110	90	
CBN 18							3,10	4,40	5,39	6,30	6,70	7,96	8,68	10,43	10,98	11,63	120	120	95	
CBN 22							3,95	5,58	6,84	8,0	8,50	10,10	11,01	13,23	13,94	14,75	113	110	90	
CBN 25							4,27	6,04	7,24	8,43	9,32	11,01	12,32	14,65	15,76	16,26	120	120	100	
CBN 32							5,90	7,70	9,15	10,80	11,92	14,30	15,78	18,90	19,90	21,26	115	110	85	
CBN 39							7,20	9,40	11,15	13,14	14,52	17,40	19,20	23,00	24,25	25,90	120	120	90	
CBN 46							8,13	11,62	13,64	15,86	17,27	19,29	22,32	25,45	27,88	29,39	125	112	90	
CBN 48							8,33	12,52	15,25	16,87	18,18	23,13	24,54	29,80	32,52	34,34	125	120	90	
CBN 59							9,29	13,23	15,96	19,29	22,32	26,06	28,18	34,64	37,67	40,70	130	128	100	
CBN 65							12,00	15,65	18,60	21,92	24,21	29,00	32,05	38,37	40,40	43,20	115	110	85	
CBN 73							13,50	17,60	20,88	24,50	27,19	32,60	36,00	43,10	45,40	48,50	115	120	90	
CBN 82							15,35	20,0	23,74	27,98	30,91	37,07	40,91	48,99	51,61	55,15	115	112	90	
CBN 94							16,77	22,32	26,87	32,72	35,45	41,92	45,96	56,26	59,89	63,33	119	120	91	
CBN 98							18,08	23,23	27,78	34,24	37,27	44,34	50,00	59,59	64,54	67,87	112	120	90	
CBN 136							24,14	35,25	42,32	48,18	51,41	60,20	67,77	81,20	86,86	91,41	118	115	75	
CBN 153							27,88	38,08	46,97	53,93	57,97	67,47	76,36	91,30	98,07	108,07	125	120	85	
CBN 200							29,69	42,32	51,41	62,62	75,95	88,68	99,59	120,19	130,29	139,38	118	125	90	

SOLID CONE SPRAY

TYPE CBN

Contact our Helpline for any special requirements:
Tel: +44 (0) 151 424 6821
Fax: +44 (0) 151 495 1043
e-mail:sales@delavan.co.uk
Web:www.delavan.co.uk

