



SPRAY CHARACTERISTICS

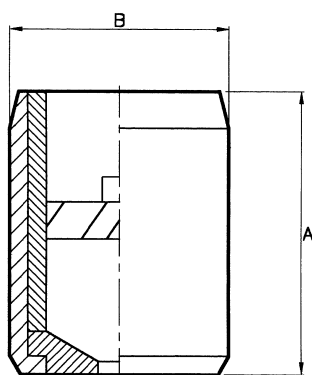
- Uniform distribution of droplets in solid cone spray pattern.
- Droplet size is larger than in hollow cone nozzles of equal capacity.
- Spray droplet size increases as flow increases at the same pressure.

CONSTRUCTION AND MATERIALS

- Support body is cast around the internal ceramic parts.
- Ceramic internals are lining, orifice plate and multi-slotted core. The ceramic resists corrosive and abrasive suspensions.
- Support body is a hard antimony lead material.
- Supply line should be welded to the outer lead casing when being installed.

ORDER EXAMPLE

3" CB 141.



DIMENSIONS AND WEIGHTS

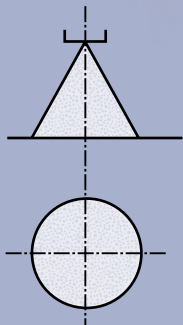
Nozzle Size	Dimensions (mm) A	B Dia.	Weight (Kg)
1"	76	47,6	0,9
1 1/4"	76	54,0	1,25
1 1/2"	76	63,5	2,3
2"	102	76,2	4,1
3"	146	114,3	5,9

Maximum Recommended Pressure: 14 Bar.G.

CAPACITY CHART

NOZZLE NUMBER	INLET SIZE (N.B.)					FLOW RATE IN LITRES/MIN AT Bar.G.										SPRAY ANGLE (°) AT Bar.G.			
	1	1 1/4	1 1/2	2	3	0,2	0,5	0,7	1	1,5	2	3	4	6	8	,35	,7	1,5	6
CB 8						-	27,88	32,06	38,68	47,27	53,73	65,15	77,16	85,45	96,46	-	80	85	88
CB 10						-	30,81	36,18	43,83	53,73	62,42	74,84	84,03	99,18	112,11	-	73	85	56
CB 11						-	34,24	41,22	48,68	60,10	70,20	84,03	94,54	112,11	127,26	-	76	89	62
CB 13						-	41,11	49,23	58,28	72,11	84,03	100,09	113,12	133,32	150,49	-	77	88	60
CB 14						-	45,65	53,81	64,74	79,39	91,91	111,10	124,23	146,45	165,64	-	73	84	60
CB 12						25,96	38,28	44,65	51,41	61,51	68,88	82,21	93,22	110,09	125,24	55	60	65	45
CB 16						34,85	51,91	59,54	70,30	84,03	95,04	114,13	129,28	153,52	175,74	65	70	75	48
CB 20						45,25	67,06	77,86	90,70	109,08	122,21	146,45	166,65	196,95	223,21	65	70	75	50
CB 26						57,87	85,45	98,47	115,14	137,36	153,52	183,82	208,06	246,44	279,77	65	70	80	52
CB 22						46,86	71,21	83,58	98,27	119,18	136,35	160,59	178,77	208,06	233,31	55	60	60	50
CB 27						56,96	89,49	103,05	124,23	151,50	173,72	205,03	228,26	267,65	296,94	60	60	60	55
CB 32						68,38	106,05	123,66	147,46	179,78	198,97	232,30	357,55	297,95	333,30	70	70	60	60
CB 38						81,71	125,24	145,18	172,71	202,00	224,22	261,59	288,86	335,32	371,68	75	75	70	65
CB 43						92,72	141,40	164,88	192,91	229,27	254,52	295,93	328,25	379,76	422,18	80	85	80	70
CB 48						104,03	157,56	183,20	216,14	260,58	297,95	352,49	390,87	-	-	70	73	75	-
CB 58						119,18	183,82	222,13	252,50	305,02	348,45	406,02	448,44	-	-	71	77	79	-
CB 67						135,34	208,06	154,19	287,85	348,45	399,96	457,53	505,00	-	-	70	75	75	-
CB 76						156,55	240,38	258,54	333,30	406,02	468,64	523,18	569,64	-	-	85	85	85	-
CB 86						130,79	275,73	329,76	376,73	456,52	519,14	587,82	633,27	-	-	88	88	89	-
CB 91						197,96	301,99	348,08	415,11	500,96	569,64	638,21	688,82	-	-	94	94	94	-
CB 86						186,35	289,82	329,76	394,91	468,64	510,05	-	-	-	-	70	73	75	-
CB 113						239,37	368,65	430,52	514,09	606,00	661,55	-	-	-	-	80	83	85	-
CB 141						300,98	456,52	535,86	629,23	743,36	813,05	-	-	-	-	85	87	90	-
CB 167						364,61	550,45	636,62	762,55	904,96	986,77	-	-	-	-	90	93	95	-
CB 180						379,76	587,82	687,0	813,05	964,55	1040,30	-	-	-	-	95	95	95	-

Contact our Helpline for any special requirements:
Tel: +44 (0) 151 424 6821
Fax: +44 (0) 151 495 1043
e-mail: sales@delavan.co.uk
Web: www.delavan.co.uk



TYPE CB

SOLID CONE SPRAY