

SPRAY CHARACTERISTICS

- Precision, low capacity nozzle with uniform distribution in a solid cone spray pattern.
- Uniform distribution of finely atomised droplets.

CONSTRUCTION AND MATERIALS

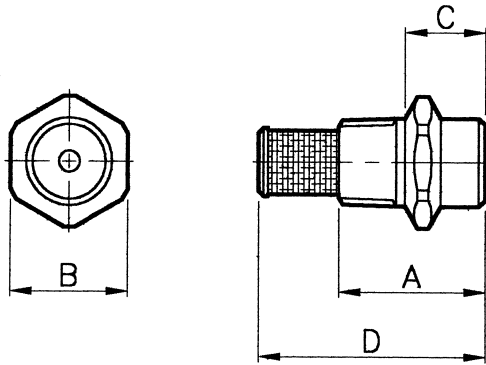
- One piece body with removable screwed core, using allen key.
- Core is multi-slotted for uniform distribution.
- Available only with 1/8" Male BSPT thread.
- Standard spray angles are 45°, 60° and 90°. Contact factory for special angles.
- Threaded strainer is optional (see chart for mesh size).
- Available in Brass or Stainless Steel as standard.
- Other materials available on a special order.

ORDER EXAMPLE

1/8" BP 4-90° Brass.

DIMENSIONS AND WEIGHTS

A	B Hex	Dimensions (mm)		Weight (g)
		C	D	
17,5	14,0	9,5	27,0	9



SOLID CONE SPRAY

TYPE BP

CAPACITY CHART

Maximum Recommended Pressure: 35 Bar.G.

NOZZLE NUMBER	MESH SIZE	FLOW RATE IN LITRES/HOUR AT Bar.G.							
		0,7	1	1,5	2	3	4	6	7
3	200	7,4	8,7	10,4	11,9	14,2	16,2	18,9	20,7
4	200	9,9	11,6	13,9	16,0	19,0	21,7	25,3	27,7
5	200	12,3	14,4	17,3	19,9	23,7	27,0	31,5	34,6
6	100	14,8	17,3	20,7	23,9	28,4	32,4	37,8	41,5
7	100	17,3	20,3	24,2	27,9	33,2	37,8	44,2	48,5
8	100	19,7	23,1	27,7	31,8	37,9	43,2	50,4	55,3
9	100	22,2	26,0	31,2	35,9	42,7	48,7	56,8	62,3
10	100	24,6	28,9	34,6	39,8	47,4	54,0	63,0	69,2
12	100	29,6	34,7	41,5	47,8	56,9	64,9	75,7	83,1
14	100	34,5	40,5	48,5	55,8	66,4	75,7	88,3	97,0
16	50	39,5	46,3	55,4	63,8	75,9	86,5	101,0	111,0
18	50	44,4	52,0	62,3	71,7	85,3	97,2	113,4	125,0
20	50	49,3	57,8	69,2	79,6	94,8	108,0	126,0	138,0
25	50	61,9	72,6	86,9	100,0	119,0	136,0	158,0	174,0
30	50	73,8	86,6	104,0	119,0	142,0	162,0	189,0	207,0

Contact our Helpline for any special requirements:
Tel: +44 (0) 151 424 6821
Fax: +44 (0) 151 495 1043
e-mail: sales@delavan.co.uk
Web: www.delavan.co.uk

