

SPRAY CHARACTERISTICS

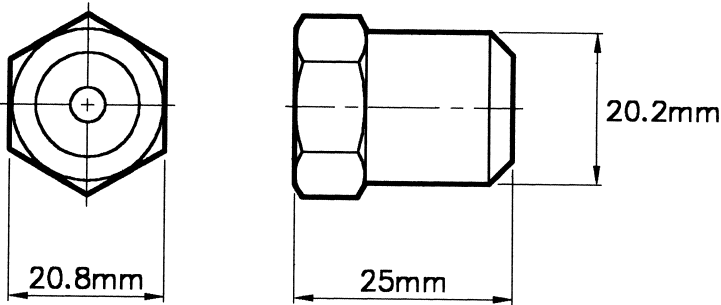
- Uniform distribution of droplets in a solid cone spray pattern.
- Droplet size is larger than in hollow cone nozzles of equal capacity.
- Purpose designed for continuous casting applications.
- Available spray angles of 50°, 65°, 80°, 90° and 120°.

CONSTRUCTION AND MATERIALS

- The nozzle uses a multi-slotted core incorporating Delavan's 'Star Slot' swirl chamber bottom.
- The core is a drive fit into the body and is not suitable for replacement.
- Inlet thread is 3/8" BSPF Female.
- Brass and Stainless Steel are standard.
- Other materials are available on a special order.

ORDER EXAMPLE

3/8" BC 55-65°, Brass.



CAPACITY CHART

Maximum Recommended
Pressure: 35 Bar.G.

NOZZLE NUMBER	FLOW RATE IN LITRES/MIN AT Bar.G.									
	1,0	1,5	2,0	2,5	3,0	4,0	5,0	6,0	7,0	
BC 40	2,31	2,38	3,27	3,65	4,0	4,62	5,10	5,62	6,11	
BC 45	2,60	3,18	3,67	4,11	4,5	5,20	5,74	6,31	6,86	
BC 50	2,89	3,54	4,08	4,56	5,0	5,77	6,37	7,05	7,61	
BC 55	3,18	3,89	4,49	5,02	5,5	6,35	7,01	7,75	8,38	
BC 60	3,46	4,24	4,90	5,48	6,0	6,93	7,65	8,46	9,15	
BC 65	3,75	4,67	5,31	5,93	6,5	7,51	8,29	9,16	9,91	
BC 70	4,04	4,95	5,71	6,93	7,0	8,08	8,92	9,87	10,66	
BC 80	4,62	5,66	6,53	7,30	8,0	9,24	10,20	11,28	12,19	
BC 90	5,20	6,36	7,35	8,22	9,0	10,39	11,47	12,69	13,71	
BC 100	5,77	7,07	8,16	9,13	10,0	11,55	12,75	14,10	15,25	
BC 110	6,35	7,80	8,98	10,04	11,0	12,70	14,02	15,51	16,78	
BC 120	6,93	8,49	9,80	10,95	12,0	13,86	15,30	16,92	18,31	
BC 140	8,08	9,90	11,42	12,78	14,0	16,16	17,84	19,74	21,32	
BC 160	9,24	11,32	13,06	14,60	16,0	18,48	20,40	22,56	24,38	

SOLID CONE SPRAY

TYPE BC

Contact our Helpline for
any special requirements:
Tel: +44 (0) 151 424 6821
Fax: +44 (0) 151 495 1043
e-mail: sales@delavan.co.uk
Web: www.delavan.co.uk

