

SPRAY CHARACTERISTICS

- Produces a uniform, flat spray pattern without hard edges at pressure of 0.5 bar and up.
- Tapered edges of pattern allow overlapping for even distribution.
- Impact of spray is generally greater with narrower spray angles assuming equal flow rates.
- Available spray angles of 0°, 15°, 25°, 40°, 50°, 65°, 80°, 90°, 100° and 110°.

CONSTRUCTION AND MATERIALS

- One piece Male BSPT thread design (1/4" and 3/8" Female BSPP threaded body available to order).
- Hexagon body with wrench flats avoid distortion when tightening.
- Tapered inlet reduces wear and resists clogging.
- Brass, Stainless Steel and Hardened Stainless Steel.
- PVC, PVDF (1/8" ACM 6 and larger only).
- Other materials available to special order.

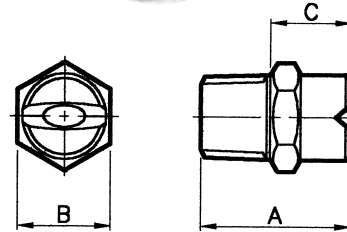
ORDER EXAMPLE

1/4" ACM (Male) 6.5-15° Brass.

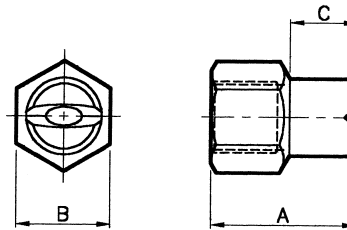
3/8" ACF (Female) 60-80° Stainless Steel.

DIMENSIONS AND WEIGHTS

Thread Size	Nozzle Type	Dimensions (mm)			Weight (g)
		A	B Hex	C	
1/8	ACM	17,5	11,3	9,5	12
1/8	ACF	24,5	15,3	12,6	20
1/4	ACM	24,5	15,3	13,0	23
1/4	ACF	25,5	18,0	12,7	30
3/8	ACM	25,5	18,0	14,0	35
3/8	ACF	39,0	20,8	21,0	55
1/2	ACM	32,0	25,7	16,0	68
3/4	ACM	36,0	28,0	19,0	100
1	ACM	50,0	38,0	28,6	240



MALE



FEMALE

Maximum Recommended Pressure:
100 Bar.G. (Metal) 7 Bar.G. (Plastic).

CAPACITY CHART

NOZZLE NUMBER	BSPT THREAD SIZE							EQUIV. ORIFICE DIA. (mm)	FLOW RATE IN LITRES/MIN AT Bar.G.								SPRAY ANGLES (°) @ 2.8 Bar.G.									
	1/8	1/4	3/8	1/2	3/4	1	0,7		1,0	2	3	4	5	7	10	0	15	25	40	50	65	80	90	100	110	
2,0							0,9	0,38	0,46	0,65	0,80	0,89	0,99	1,24	1,43									*	*	
3,0							1,10	0,57	0,68	0,97	1,18	1,36	1,53	1,81	2,23									*	*	
4,0							1,25	0,75	0,90	1,27	1,56	1,83	2,03	2,38	2,86										*	
4,5							1,3	0,85	1,01	1,43	1,75	2,05	2,29	2,70	3,21											
5,0							1,4	0,96	1,15	1,62	1,99	2,28	2,55	3,02	3,62											
5,5							1,45	1,05	1,26	1,78	2,18	2,50	2,81	3,29	4,11											
6,0							1,5	1,15	1,37	1,94	2,37	2,72	3,07	3,61	4,46											
6,5							1,6	1,24	1,48	2,09	2,56	3,00	3,33	3,80	4,91											
7,0							1,65	1,33	1,59	2,25	2,75	3,21	3,54	4,21	5,36											
8,0							1,75	1,53	1,83	2,59	3,17	3,66	3,98	5,03	5,80											
8,5							1,8	1,62	1,94	2,74	3,36	3,88	4,32	5,03	5,80											
9,0							1,9	1,72	2,05	2,90	3,55	4,11	4,75	5,50	6,25											
10							2,0	1,90	2,27	3,21	3,93	4,46	5,19	5,95	7,14											
12,5							2,2	2,40	2,90	4,02	4,97	5,69	6,38	7,55	9,04											
15							2,4	2,84	3,44	4,21	6,16	6,70	7,78	9,15	10,71											
20							2,8	3,80	4,46	6,25	8,05	9,37	9,94	12,35	14,73											
25							3,1	4,80	5,80	8,03	9,94	11,38	12,75	15,09	18,08											
30							3,6	5,95	6,70	9,82	11,84	13,84	15,13	17,84	21,43											
40							4,0	7,78	9,37	12,05	15,62	18,30	20,57	24,25	28,57											
50							4,4	9,61	11,61	16,07	19,89	22,77	25,50	30,19	36,16											
60							4,8	11,44	13,84	19,20	23,67	27,23	30,69	36,14	43,30											
70							5,2	13,27	16,07	22,77	27,46	32,14	35,88	42,54	50,45											
80							5,6	15,10	18,75	25,45	31,72	36,61	41,06	48,03	57,14											
100							6,4	19,21	22,77	31,70	39,30	45,53	51,00	60,38	72,32											
125							7,0	24,01	28,46	39,62	49,12	56,91	63,75	75,48	90,40											
150							7,5	28,82	34,37	48,21	59,19	68,31	76,50	90,10	108,0											
200							8,8	37,96	45,53	64,28	79,07	91,10	102,0	120,3	143,8											
250							9,8	45,57	58,84	80,36	98,50	113,4	127,5	150,0	179,9											
300							10,8	57,18	68,30	96,87	118,4	136,6	152,6	180,7	215,6											
400							12,5	76,39	90,60	128,6	157,7	182,1	204,0	241,1	287,9											
500							14,0	95,40	114,0	161,3	197,5	228,0	254,9	301,6	360,5											
600							15,0	114,4	136,8	193,5	237,0	273,7	306,0	362,1	432,8											

* Brass Only

FLAT SPRAY

TYPE AC

Contact our Helpline for any special requirements:
Tel: +44 (0) 151 424 6821
Fax: +44 (0) 151 495 1043
e-mail: sales@delavan.co.uk
Web: www.delavan.co.uk

